



CLEVE HILL SOLAR PARK

ENVIRONMENTAL STATEMENT
VOLUME 4 - TECHNICAL APPENDIX A11.3
ADDITIONAL VISUALISATIONS

November 2018
Revision A

Document Reference: 6.4.11.3
APFP Regulation: 5(2)(a)

www.clevehillsolar.com

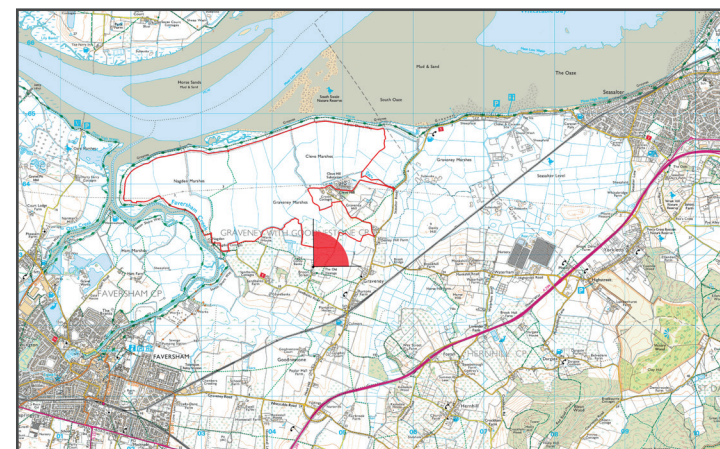




Approximate Extent of The Development Site

Cleve Hill

Denley Hall



OS reference: 605479 12864
 Approximate AOD: 5m AOD
 Direction of view: 46.8°
 Distance to CLSA: 253m

Horizontal field of view: 90°
 Principal distance: 500mm
 Paper size: 841 x 297 mm
 Correct printed image size: 820 x 170 mm

Camera: Nikon D3
 Lens: 50mm f1.8D
 Camera height: 1.6m
 Date and time: 07/02/2018 13:01



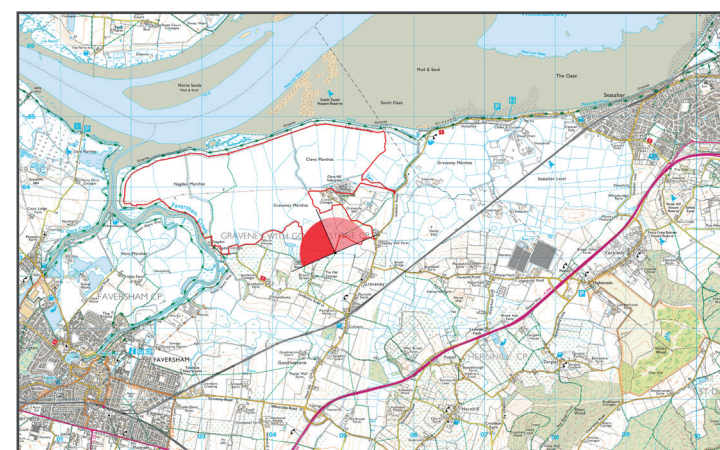
Volume 4 Technical Appendix A11.3 Cultural Heritage - **Figure: 1**
 Sparrow Court

Cleve Hill Solar Park Environmental Statement

"CLSA" - Core Landscape Study Area



Approximate Extent of The Development Site



OS reference: 604880 163053
 Approximate AOD: 4m AOD
 Direction of view: 290°
 Distance to CLSA: 50m

Horizontal field of view: 90°
 Principal distance: 500mm
 Paper size: 841 x 297 mm
 Correct printed image size: 820 x 170 mm

Camera: Nikon D5
 Lens: 50mm f1.8D
 Camera height: 1.6m
 Date and time: 21/06/2018 13:20



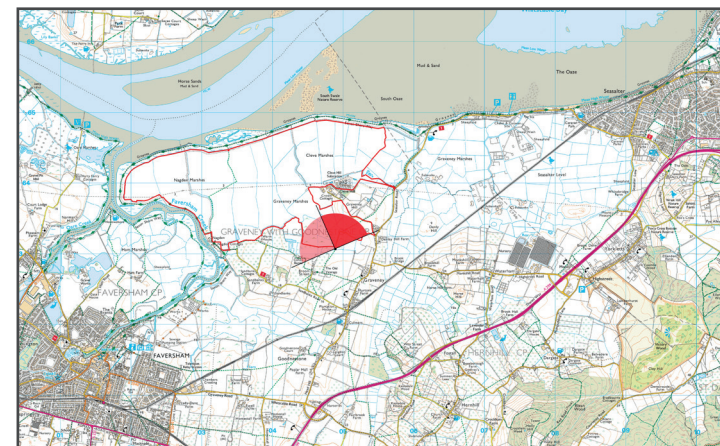
Volume 4 Technical Appendix A11.3 Cultural Heritage - **Figure: 2a**
 Public Right of Way (ZR488) near southern boundary of the Core Landscape Study Area



Approximate Extent of The Development Site

Crown Cottages

Graveney Hill



OS reference: 604880 163053
 Approximate AOD: 4m AOD
 Direction of view: 20°
 Distance to CLSA: 50m

Horizontal field of view: 90°
 Principal distance: 500mm
 Paper size: 841 x 297 mm
 Correct printed image size: 820 x 170 mm

Camera: Nikon D5
 Lens: 50mm f1.8D
 Camera height: 1.6m
 Date and time: 21/06/2018 13:20

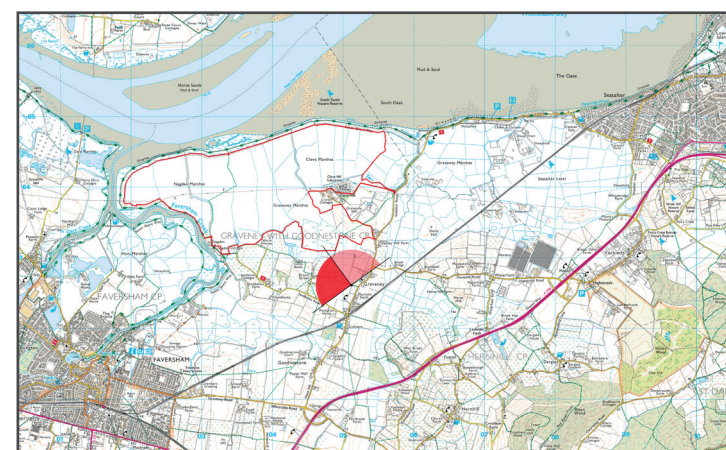


Volume 4 Technical Appendix A11.3 Cultural Heritage - **Figure: 2b**
 Public Right of Way (ZR488) near southern boundary of the Core Landscape Study Area



Approximate Extent of The Development Site

Sparrow Court



OS reference: 605113 162622
 Approximate AOD: 11m AOD
 Direction of view: 286°
 Distance to CLSA: 537m

Horizontal field of view: 90°
 Principal distance: 500mm
 Paper size: 841 x 297 mm
 Correct printed image size: 820 x 170 mm

Camera: Nikon D3
 Lens: 50mm f1.8D
 Camera height: 1.6m
 Date and time: 18/05/2018 15:11



Volume 4 Technical Appendix A11.3 Cultural Heritage - **Figure: 3a**
 Junction of Public Rights of Way ZR490 and ZR48

Cleve Hill Solar Park Environmental Statement

"CLSA" - Core Landscape Study Area



OS reference: 605113 162622
 Approximate AOD: 11m AOD
 Direction of view: 16°
 Distance to CLSA: 537m

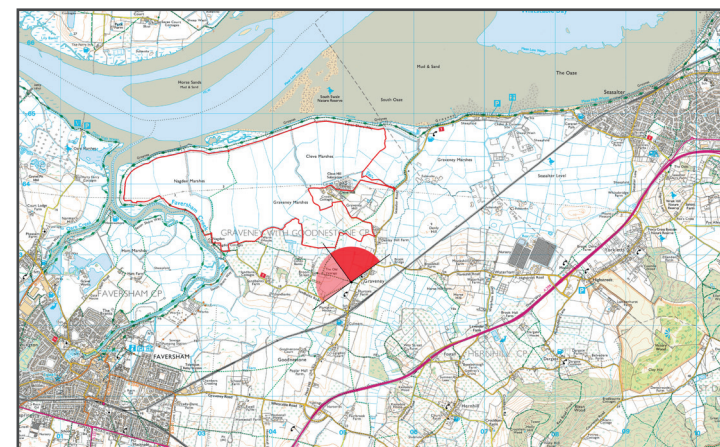
Horizontal field of view: 90°
 Principal distance: 500mm
 Paper size: 841 x 297 mm
 Correct printed image size: 820 x 170 mm

Camera: Nikon D3
 Lens: 50mm f1.8D
 Camera height: 1.6m
 Date and time: 18/05/2018 15:11

"CLSA" - Core Landscape Study Area



Volume 4 Technical Appendix A11.3 Cultural Heritage - **Figure: 3b**
 Junction of Public Rights of Way ZR490 and ZR48

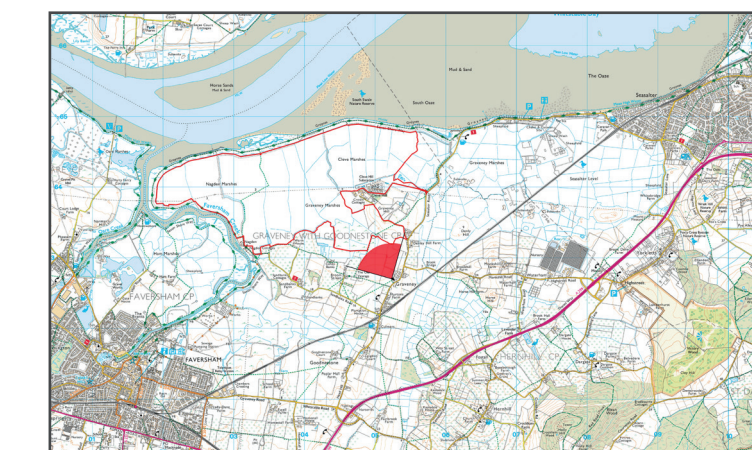


Cleve Hill Solar Park Environmental Statement



Approximate Extent of The Development Site

Graveney Court Farm



OS reference: 605255 162696
 Approximate AOD: 13m AOD
 Direction of view: 329.93°
 Distance to CLSA: 508m

Horizontal field of view: 90°
 Principal distance: 500mm
 Paper size: 841 x 297 mm
 Correct printed image size: 820 x 170 mm

Camera: Nikon D3
 Lens: 50mm f1.8D
 Camera height: 1.6m
 Date and time: 24/04/2018 09:45



Volume 4 Technical Appendix A11.3 Cultural Heritage - **Figure: 4**
 From the west side of All Saints Church

Cleve Hill Solar Park Environmental Statement

"CLSA" - Core Landscape Study Area



OS reference: 605245 162700
 Approximate AOD: 13m AOD
 Direction of view: 314.67°
 Distance to CLSA: 495m

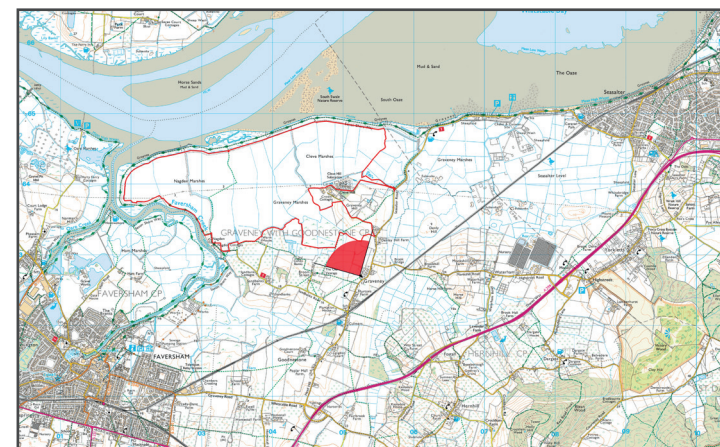
Horizontal field of view: 90°
 Principal distance: 500mm
 Paper size: 841 x 297 mm
 Correct printed image size: 820 x 170 mm

Camera: Nikon D3
 Lens: 50mm f1.8D
 Camera height: 1.6m
 Date and time: 24/04/2018 11:34

"CLSA" - Core Landscape Study Area



Volume 4 Technical Appendix A11.3 Cultural Heritage - **Figure: 5**
 View from boundary of All Saints Churchyard



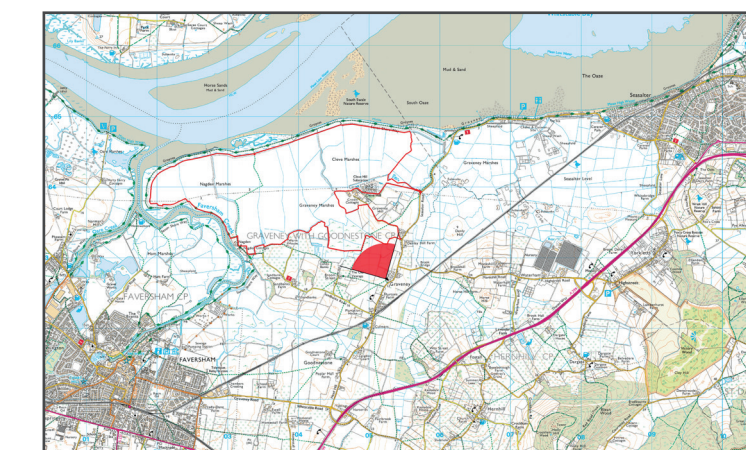
Cleve Hill Solar Park Environmental Statement



Approximate Extent of The Development Site

Sparrow Court

Graveney Hill



OS reference: 605222 162685
 Approximate AOD: 11m AOD
 Direction of view: 323.84°
 Distance to CLSA: 425m

Horizontal field of view: 90°
 Principal distance: 500mm
 Paper size: 841 x 297 mm
 Correct printed image size: 820 x 170 mm

Camera: Nikon D5
 Lens: 50mm f1.8D
 Camera height: 1.6m
 Date and time: 21/06/2018 12:51



Volume 4 Technical Appendix A11.3 Cultural Heritage - **Figure: 6**
 Public Right of Way (ZR490) in proximity to All Saints Church

Cleve Hill Solar Park Environmental Statement

"CLSA" - Core Landscape Study Area



OS reference: 605271 162653
 Approximate AOD: 12m AOD
 Direction of view: 340.43°
 Distance to CLSA: 589m

Principal distance: 500mm
 Paper size: 841 x 297 mm
 Correct printed image size: 385 x 256 mm

Camera height: 1.6m
 Date and time: 19/09/2018 07:05

"CLSA" - Core Landscape Study Area



Volume 4 Technical Appendix A11.3 Cultural Heritage - **Figure 7**
 View from All Saints Church Lychgate

Cleve Hill Solar Park Environmental Statement